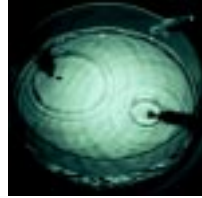


LED STROBE UNIT

N99-A05-7846

\$266

This strobe unit is indispensable for observing the motion of dynamic carriages, vibration cords, and propagation of water waves. This economical solution is designed for portability and the high brightness range is achieved using a high-output LED. The flash rate can be read using a digital tester measuring the frequency range (not provided).



FEATURES

- Bright and high-output white LED.
- Handy and low-priced; most suitable for student experiments and group observation.
- Simple operation with On/Off switches and knob.

SPECIFICATIONS

- * Light source: High-output white LED (350mA, 1W max.)
- * Variable frequency range: 2.5-250Hz (150-15,000rpm), steplessly variable
- * Light emission pulse width: Fine-tune 4-stage switching
- * Power source: Eight alkaline R03 (AAA) batteries (not included)

- * Dimensions: 54x40x69mm (excluding projections)
- * Weight: Approx. 171g (excluding batteries)
- * Others: RCA terminal for flash rate measurement, Input terminal for external LED
- * Oxyride dry-cell batteries recommended

WIDE-ANGLE LED MODULE

N99-A05-7846-01

\$67



The wide-angle LED Module is designed with a 110 degree radiation angle to permit the observation of wide-range objects. By connecting this module to the external terminal of the Strobe Unit, you can easily conduct and observe wide-range experiments.

SPECIFICATIONS

- Light source with heat sink: wide-angle white LED (110-degree radiation angle; 350mA, 1W max.)
- Connection: Single mini-plug
- Dimensions: 20x31x20mm (excluding projections)
- Weight: Approx. 27g



LED STROBE ADAPTER

N99-A05-7846-02

\$332

Low-frequency transmitters are generally available in high school science classrooms. By connecting the LED Strobe Adapter to a low-end frequency transmitter, you can use it as a Strobe Unit. The AC adapter with three wide-angle high output LED's supplies power to provide a bright wide-range flash.

SPECIFICATIONS

- Light source: Three wide-angle high output LEDs (with emission pulse width adjust function)
- Power source: 12VDC, 500mA, AC-DC adapter (included)
- Input terminal: Single mini-plug
- Dimensions: 86x50x48mm (excluding projections)
- Weight: Approx. 116g

