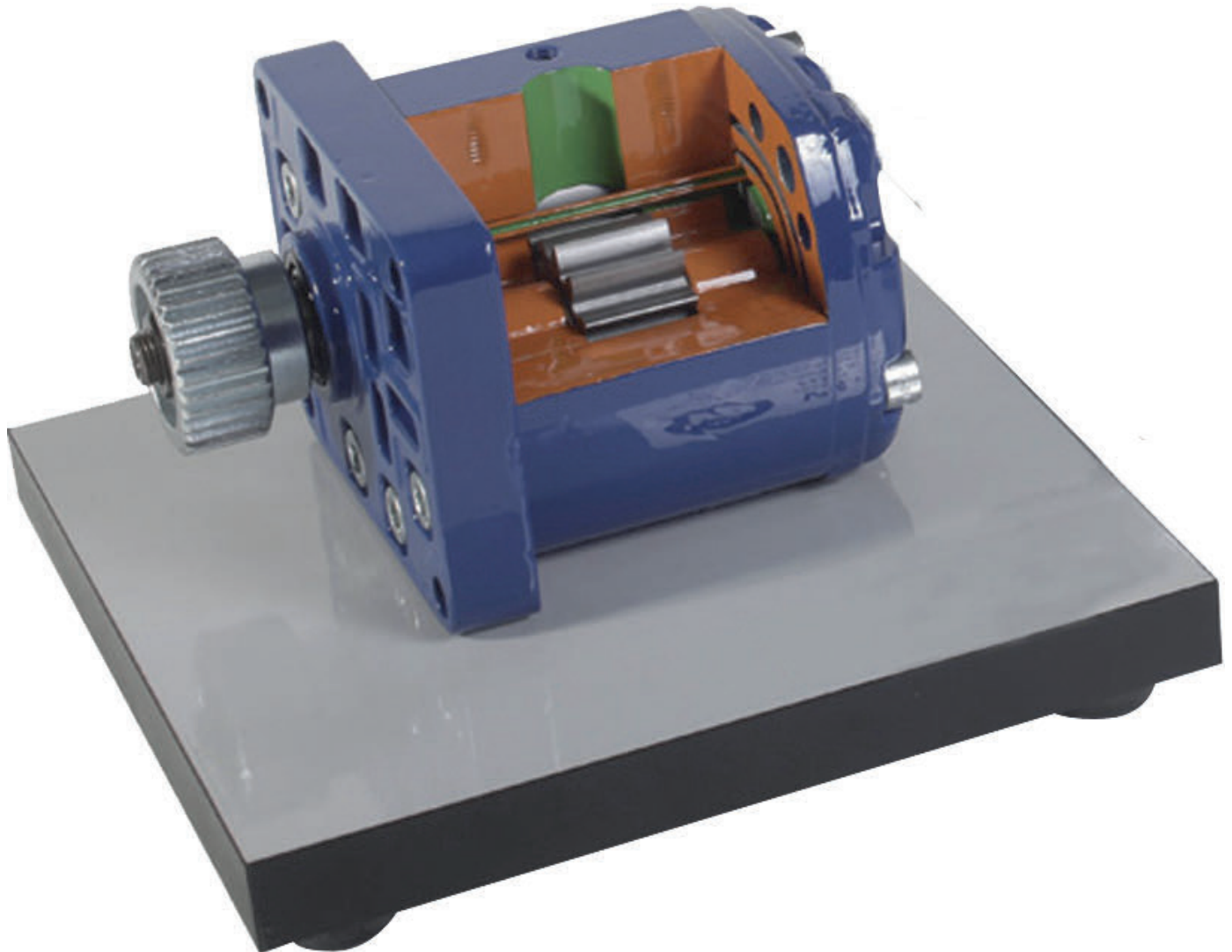


HYDRAULIC GEAR ENGINE

N98-ND13101



By turning the gear knob manually, you will see both the gears turn. These two gears transform high pressure from hydraulic fluid into mechanical energy.

SPECIFICATIONS

- Hydraulic gear engine
- Aluminium cover
- Gears made of steel

WEIGHT AND DIMENSIONS

20cm x 20cm x 14cm (L x W x H)

Net Weight: 3 kg

Gross Weight: 4 kg



MOUNTED ON BASE

Version2.1.JL060215



LOOK US UP ONLINE