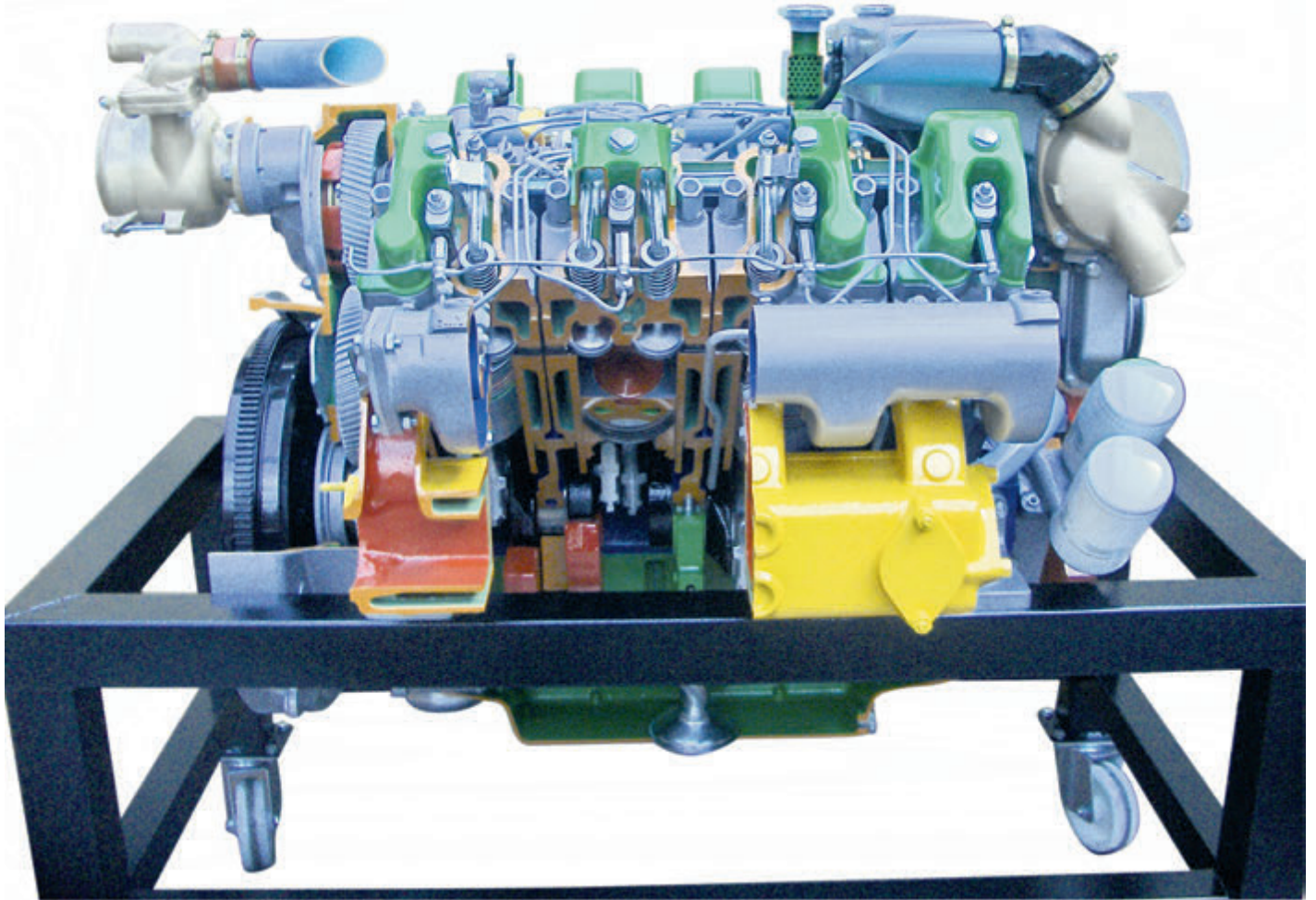


MARINE INBOARD DIESEL ENGINE 8-CYLINDER, TURBOINTERCOOLER

N98-ND7950HI



PERFORMANCE

- Power pleasure boat DIN 6270 "B": 320 CV (235Kw) at 2000 rpm
- Power fishing boat DIN 6270 "A": 280 CV (205Kw) at 1800 rpm
- Fuel consumption: 162 gr/HP-hr
- Dry weight: 1260kg

STANDARD EQUIPMENT

- 4.8KW - 24V starter motor
- 45A - 28V alternator
- Lube-oil and fuel filter
- Air filter
- Freshwater engine cooling system with seawater heat exchanger
- Engine and reserve/reduction gear lubrication oil cooled by a seawater heat exchanger
- Freshwater cooled exhaust manifold
- Bronze seawater circulating pump
- Centrifugal pump for freshwater circulation
- Scavenge oil hand pump

SPECIFICATIONS

- 4-stroke diesel engine
- Direct Injection
- Aspiration:
Turbocharged - Interrefridgerated
- 8-cylinder
- Bore x stroke: 130 x 140mm
- Total displacement: 14858cm³
- Operates electrically at 120 volt
- Mounted on stand with wheels



OPERATES
ELECTRICALLY



MOUNTED ON
STAND WITH WHEELS

Version2.2.JL011216



LOOK US UP ONLINE