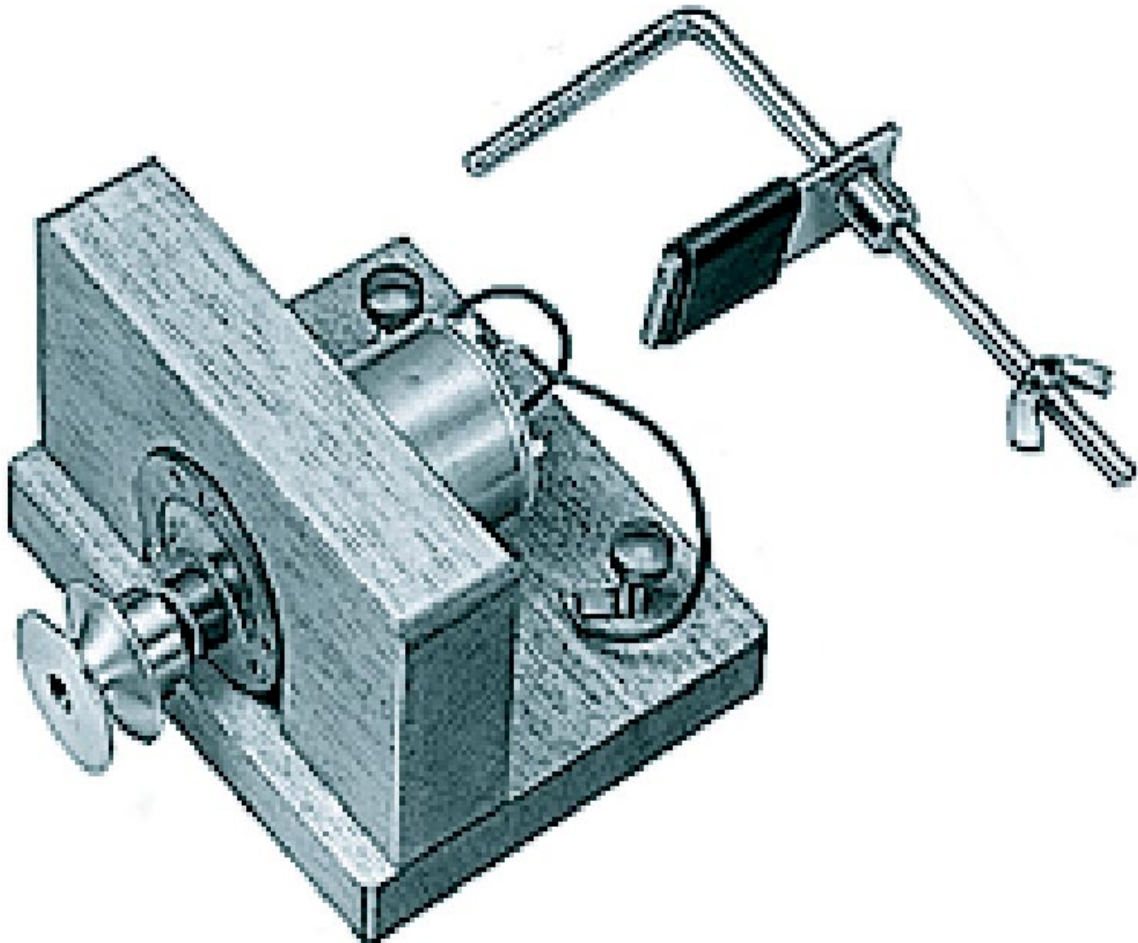


## Manual of Operation

### Important!

Read the following before using this equipment:

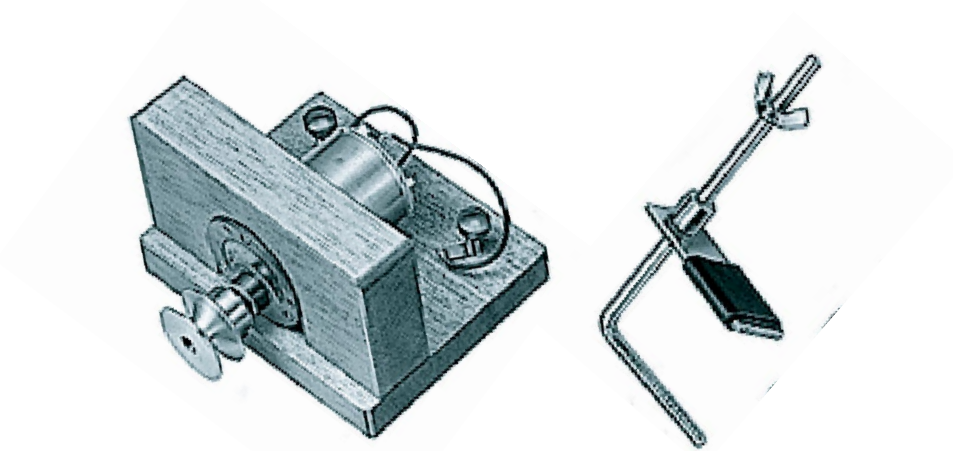
Carefully follow all instructions and observe all precautions given in this manual.



## ELECTRIC WINCH N99-B10-2631-08

### Purpose

This apparatus is designed for experiments to confirm that light and electrical energies perform work, and it can also be used as a device related to a hand operated generator.



### Specification

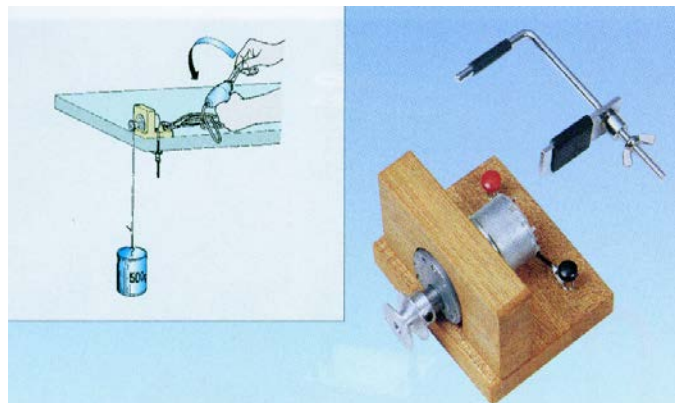
#### General use:

- \* One 1.5V dry cell (hoisting of 500g or more weight)
- \* One solar cell (P-320) (hoisting of 500g or more weight) (when using a 60W electric lamp)
- \* Configuration: main body: Size - 100x95x63mm with a pulley, motor, precision gearbox, and two terminals.

Accessory: One F-shaped clamp.

### Example of usage

1. When using a hand operated generator
  - \* Fix the stand-mounted motor to a testing bench with a F-shaped clamp.
  - \* Put one end of a piece of string through the hole of the pulley and tie it there securely. Attach a weight to the other end.
  - \* Clamp the terminals with cord clips for the hand-operated generator, and experiment by turning the handle.



### Precautions

Limit the weight on the pulley to a maximum of 4kgs when using the generator. If this size of load is exceeded, the weight cannot be hoisted because of slipping even if the handle is turned.