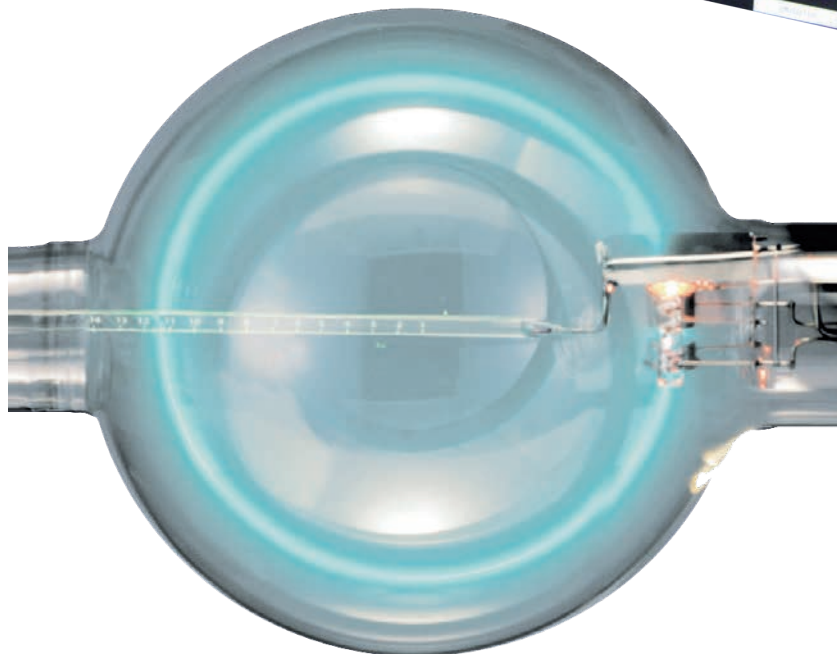
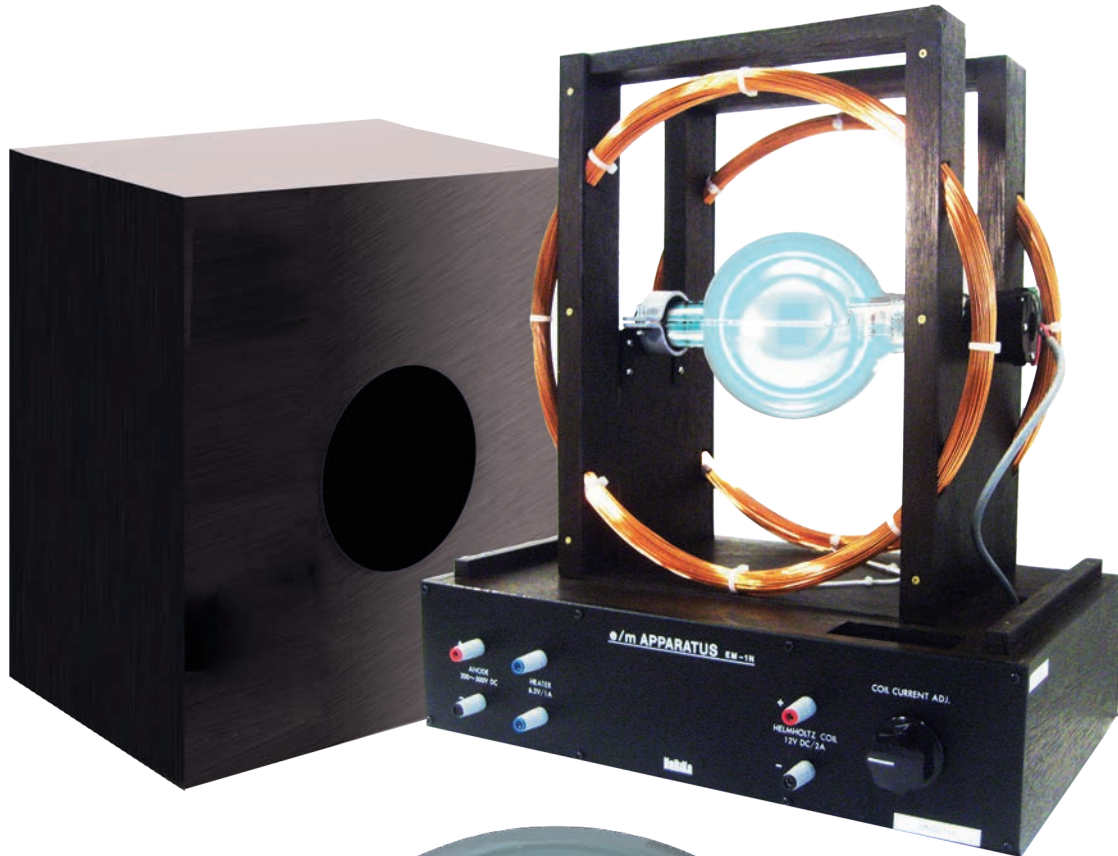


# Nakamura E/M APPARATUS TUBE

## INSTALLATION INSTRUCTIONS

N99-B10-7350



### Manual of Operations

**IMPORTANT!**

**Read the following before using this equipment:**

Carefully follow all instructions and observe all precautions given in this manual

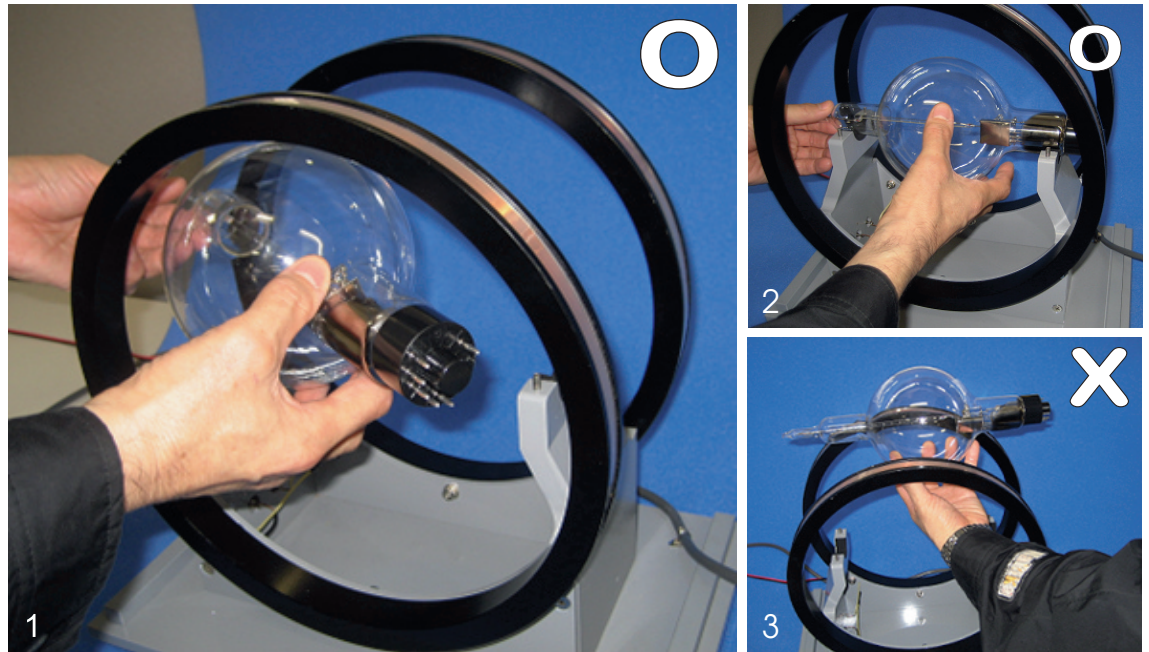


LOOK US UP ONLINE

### STEP 1

Install the discharge tube by positioning it through the side of the Helmholtz coil as shown in Picture 1 and 2.

**DO NOT** insert the tube through the top of the apparatus as damage may occur (as shown 3).

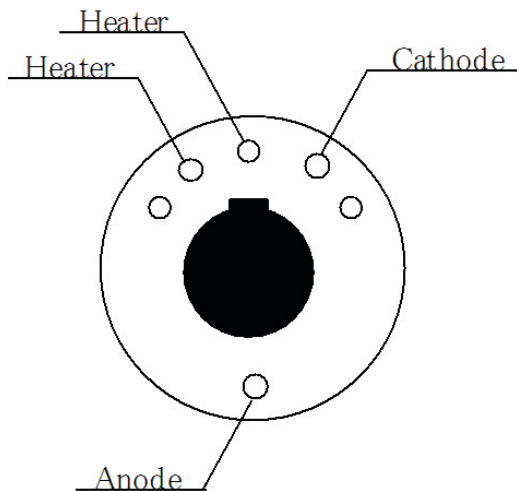


### STEP 2

Connect the socket to the plug of the discharge tube as shown. See the diagram to view a close up of the discharge tube connection. Pins must be positioned with holes as the socket is keyed.

⊙ = Correct

⊗ = Incorrect



### STEP 3

Place metal fitting A (larger fitting) to the right side, and B (smaller fitting) to the left side and secure the fittings with washers and screws.

