



PO Box 1336  
Champlain, NY 12919  
1-800-799-6232  
[support@nadascientific.com](mailto:support@nadascientific.com)

---

## **Locomotive 3-D Interlocking Puzzle**

N97-51

### **Introduction**

For the proper use of this product, please read this manual before use. Keep this manual with the product for reference.

### **Contents:**

1. Interlocking wooden puzzle (36 parts) (Please note that there are 6 special adjustment parts located between the tires and the body.)
2. Manual
3. Wood Glue (for repairing)

### **Safety instructions**

This product is designed for customers of all age, from children to adults. However, in order to properly use this product and to prevent the damage to both the products and the people playing with them, please note the following warnings.

1. There are several fragile parts. Also there may be some small and sharpened parts because of the structure and shape of the puzzle. To prevent any accidents, children should have supervision when assembling and disassembling it.
2. Don't place close to fire and water.
3. If pieces are put together too tightly for easy disassembly, it can be broken by use of strength. Hold all parts firmly, and exert force in the vertical or horizontal direction as needed.
4. If pieces break, don't worry. If grain is matched, it is possible to restore it beautifully.
5. Do not ingest any of these pieces.

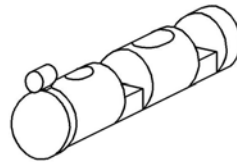
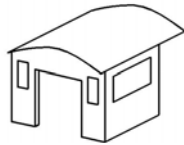
### **Notes:**



PO Box 1336  
Champlain, NY 12919  
1-800-799-6232  
[support@nadascientific.com](mailto:support@nadascientific.com)

---

- Some parts may change color due to the friction that occurs during processing.
- The parts shown below are very fragile. Handle with care.



- One of the ways wooden puzzles and toys differ from plastic ones is that they can be easily repaired if broken. You can use the enclosed paste or any other wood glue.
- Also, feel free to modify! You can round its angles with sandpaper, paint or stain it.